



American Ultraviolet®

Insightful Solutions. Remarkable Results. Since 1960.

UPPER AIR UVC FIXTURES

(commonly referred to as “Upper Room” UVC) directly expose the air in the upper unoccupied portion of the room to continuous germicidal energy while keeping occupants safe and free from exposure.

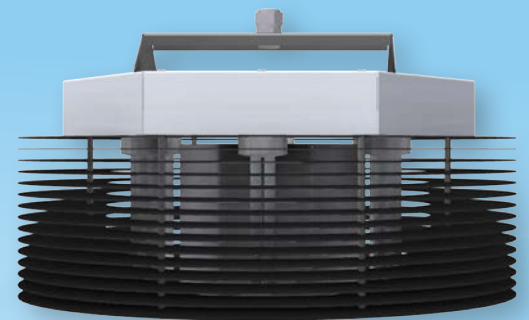
Upper Air UVC fixtures are recognized by the CDC, WHO, and ASHRAE as effective solutions for lowering airborne microorganisms in the indoor environment. The use of UVC fixtures for airborne disinfection has grown consistently over the past 62 years and is currently being used in Healthcare, Educational, Industrial, Commercial, and Residential applications worldwide.

American Ultraviolet has been the leading manufacturer of Upper Air UVC fixtures since 1960 and we continue to lead the way with our full “Made in the U.S.A.” product line.

BENEFITS OF ALL AMERICAN ULTRAVIOLET UPPER AIR DISINFECTION SOLUTIONS

- Improve Indoor Air Quality (IAQ)
- Air disinfection in occupied spaces
- Operate 24/7 with no maintenance
- Louvered units safely direct the energy into the unoccupied portion of the space

Note: Upper Air UVC fixtures from American Ultraviolet do not produce ozone or other secondary contaminants



Upper Air UVC Fixtures

UVC Germicidal Solutions



UPPER AIR UVC

Fixtures



Corner Mount (CM) Series

The louvered CM series Upper-Air UVC disinfection units are designed to be mounted in the corners of rooms where air disinfection is needed. A single CM unit can cover 75-100 square feet and multiple fixtures can be used to increase the coverage area. The CM 15 units are designed to operate on a 120 or 220-volt electrical feed, feature a 6,000-hour lamp, conform to UL Std 1598, and are certified to CSA C22.2#250.0.

Corner Mount (CM) Series Offerings						
Model Number	Coverage Area	Electrical	Dimensions (WxHxD)	Weight	Replacement Lamp	Replacement Ballast
CM15	100 Sq. Ft.	110V, 60 Hz 0.13A	11" x 9.25" x 9"	6.5 lb	GML500	N/A
CM15/220	100 Sq. Ft.	220V, 50/60 Hz 0.07A	11" x 9.25" x 9"	6.5 lb	GML510	N/A



Tuberculosis (TB) Series

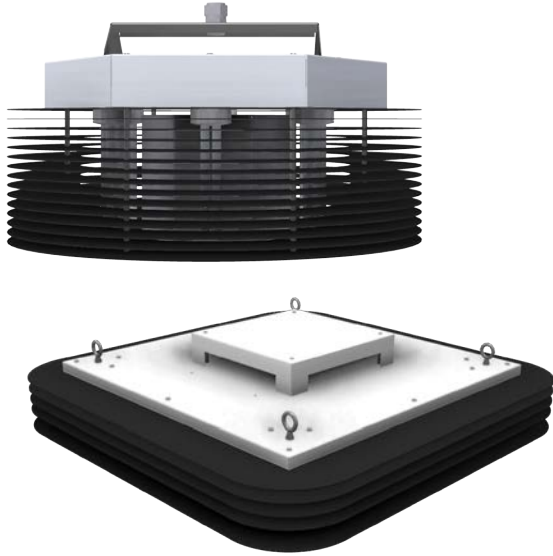
The louvered TB Upper-Air series units are designed to be wall mounted at a minimum height of 7 ½ feet off the floor. The TB series fixtures are available in three sizes based on coverage area. The models are based on 150, 250 and 350 square feet of coverage. Multiple fixtures can be used to cover areas larger than 350 square feet. TB units are designed to operate on a 110-277-volt electrical feed, include a two-year (17,000 hour) lamp, a 10-year warranty on the ballast, conform to UL Std. 1598, and are certified to CSA C22.2#250.0.

Tuberculosis (TB) Series Offerings						
Model Number	Coverage Area	Electrical	Dimensions (WxHxD)	Weight	Replacement Lamp	Replacement Ballast
TB-12-W	150 Sq. Ft.	110-277V, 50/60 Hz 0.2-0.1A	19" x 5.25" x 6.5"	12 lb	SBL350	TXG010B
TB-24-W	250 Sq. Ft.	110-277V, 50/60 Hz 0.3-0.12A	28" x 5.25" x 6.5"	16 lb	SBL325	TXG010B
TB-36-W	350 Sq. Ft.	110-277V, 50/60 Hz 0.5-0.2A	39" x 5.25" x 6.5"	20 lb	SBL005	TXG010B



UPPER AIR UVC

Fixtures



Pendant 360° (STBF) Series

The louvered STBF (Pendant 360°) Upper-Air series units are designed to be suspended in occupied spaces at a minimum height of 7 ½ feet off the floor for the STBF-12 units, and 12 ½ feet off the floor for the STBF-24 units. STBF series fixtures provide 600 -1,400 square feet of coverage per fixture. Multiple fixtures can be used to cover larger areas. STBF series units utilize fans to aid with air mixing, operate on a 120 or 220-volt electrical feed, include 6,000-17,000-hour bulbs / lamps, and a 10-year warranty on the ballast.

Pendant 360° (STBF) Series Offerings						
Model Number	Coverage Area	Electrical	Dimensions (WxHxD)	Weight	Replacement Lamp	Replacement Ballast
STBF-12	800 Sq. Ft.	110V, 60 Hz 1.4A	22"(dia.) x 13"	20 lb	GML550	N/A
STBF-12-220	800 Sq. Ft.	220V, 50/60 Hz .7A	22"(dia.) x 13"	20 lb	GML560	N/A
STBF-24	1440 Sq. Ft.	110-277V, 50/60 Hz 2.9-1.6A	40" x 40" x 10.18"	48 lb	GML1024	TXG015B



RAM (Rapid Air Movement) Series

The fully enclosed RAM Upper-Air Series air disinfection units are designed for areas with low ceilings, or where a tamper proof fixture is needed. The RAM series features a dual lamp configuration with fan assisted rapid air movement. These fixtures are available in two lamp sizes (14" or 36"), operate on a 120 or 220-volt electrical feed, feature a two-year (17,000 hour) lamp and a full 10-year warranty on the ballasts.

RAM (Rapid Air Movement) Series Offerings						
Model Number	Coverage Area	Electrical	Dimensions (WxHxD)	Weight	Replacement Lamp	Replacement Ballast
RAM14-2	250 Sq. Ft. @ 3+ACH*	110, 230V, 60 Hz 0.9-0.5	23.5" x 4.3" x 5.2"	8 lb	SBL410 (x2)	TXG350B (x2)
RAM36-2-120	400 Sq. Ft. @ 5+ACH**	110V, 60 Hz 1.9A	48" x 7.4" x 6.3"	24 lb	SBL420 (x2)	TXG270 (x2)
RAM36-2-220	400 Sq. Ft. @ 5+ACH**	220V, 50/60 Hz 1.0A	48" x 7.4" x 6.3"	24 lb	SBL420 (x2)	TXG275 (x2)

* ACH calculations based on 15'x15'x8' room size

**ACH calculations based on 20'x20'x8' room size



UPPER AIR UVC

Fixtures



Tuberculosis Mercury Free (TB-LED) Series

The TB-LED mercury-free Upper-Air series units are designed to be wall mounted in occupied spaces at a minimum height of 7 1/2 feet off the floor. The TB-LED series units conform to UL 1598_4th Ed.-2018, UL 8802_Issue 4_August-2021, IEC 61020-1:2010/A1:2016, EN 61010-1:2010/A1:2019, IEC 62471:2006 (First Edition) and is CE Marked CAN/CSA C22.2 No. 250.0-18_4th Ed

Tuberculosis Mercury Free (TB-LED) Series Offering						
Model Number	Coverage Area	Electrical	Dimensions (WxHxD)	Weight	Replacement Lamp	Replacement Ballast
TB-LED	300 Sq. Ft.	90-240V, 50/60 Hz 0.33-0.125A	11.8" x 4.61" x 7.22"	5.5 lb	consult factory	N/A



American Ultraviolet®

Insightful Solutions. Remarkable Results. Since 1960.

Corporate HQ, Lebanon, IN • Torrance, CA • Hackettstown, NJ
765.483.9514

americanultraviolet.com



Represented by: