



Closed End (CE) Reflector Germicidal Fixtures

American Ultraviolet Closed End Reflector Germicidal Fixtures

are designed for general surface sterilization purposes and, with up to 4 lamps per fixture, CE fixtures are often used to direct and confine a substantial dose of UVC energy to very specific areas.

Applications

CE Series fixtures from American Ultraviolet are available with one, two, three, or four tubular germicidal (254 nm) ultraviolet lamps for a range of applications, including laboratory bench decontamination and conveyor sterilization.

The CE Series is available as a free-standing fixture, or with adjustable, tripod style legs that are easily set and lock tightly, and that permit varying the proximity of the lamp from 10" from the surface to a maximum of 39".

CE Series



Miniature CE Reflector fixtures provide the bacteriological and general laboratory fields with a small, dependable ultraviolet source. These portable, compact units are readily adaptable for long wave (365 nm) and shortwave (254 nm) ultraviolet applications. They're ideal for EPROM erasing (one to nine chips) and deliver results in less than 10 minutes.

Benefits

- Direct surface sterilization of DNA-based contaminants
- Spectrally polished reflectors maximize UVC lamp output
- 1, 2, 3, or 4 lamps per fixture
- 6"-37" fixture lengths
- Hot Cathode, Cold Cathode and Slimline fixtures available
- Simple, tool-free lamp change



Closed End Reflector Germicidal Fixtures

TECHNICAL DATA

ONE LAMP			
Style	Lamp Required (1) *	U.V. Watts	Dimensions L W H
CE-30-C	GML010	8.3	37
CE-20-C	GML025	5.5	27
CE-10-C	GML020	2.8	18
CE-36	GML005	13.8	37
CE-10-SL	GML060	5.3	18
CE-30-H	GML220	8.3	37
CE-25-H	GML215	5.0	18
CE-15-H	GML210	3.6	18

TWO LAMP			
Style	Lamp Required (2) *	U.V. Watts	Dimensions L W H
CE-30-2C	GML010	16.6	37
CE-20-2C	GML025	11.0	27
CE-10-2C	GML020	5.6	18
CE-36-2	GML005	27.6	37
CE-10-2SL	GML060	10.6	18
CE-30-2H	GML220	16.6	37
CE-25-2H	GML215	10.0	18
CE-15-2H	GML210	7.2	18

THREE LAMP			
Style	Lamp Required (3) *	U.V. Watts	Dimensions L W H
CE-30-3C	GML010	24.9	37
CE-20-3C	GML025	16.5	27
CE-10-3C	GML020	8.4	18
CE-36-3	GML005	41.4	37
CE-30-3H	GML220	24.9	37
CE-25-3H	GML215	15.0	18
CE-15-3H	GML210	10.8	18

FOUR LAMP			
Style	Lamp Required (4) *	U.V. Watts	Dimensions L W H
CE-30-4C	GML010	33.2	37
CE-20-4C	GML025	22.0	27
CE-36-4	GML005	55.2	37
CE-10-4SL	GML060	21.2	18
CE-30-4H	GML220	33.2	37
CE-25-4H	GML215	20.0	18
CE-15-4H	GML210	14.4	18

MINIATURE TECHNICAL DATA

ONE LAMP			
Style	Lamp Required	U.V. Watts	Dimensions L W H
CE-12-H	GML125	4.6	12
CE-8-H	GML205	1.5	12
CE-6-H	GML195	1.0	9
CE-4-H	GML180	4.5	6

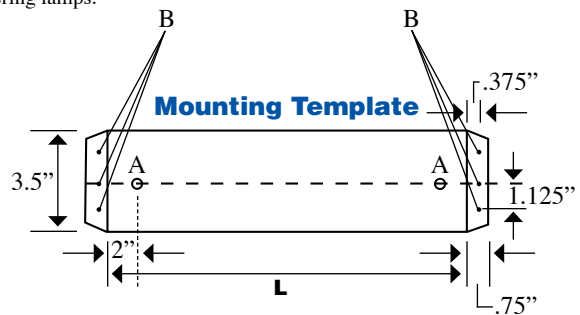
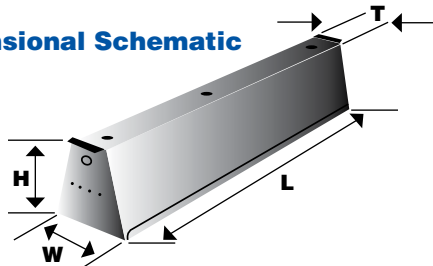
TWO LAMP			
Style	Lamp Required	U.V. Watts	Dimensions L W H
CE-12-2H	GML125	9.2	12
CE-8-2H	GML205	3.0	12
CE-6-2H	GML180	2.0	9

All miniature Closed End Reflector Series fixtures have a cast aluminum handle. The overall height, with handle, is 6 7/8". Units are 118 Volts, 60 Hz.

All CE Reflector fixtures are supplied with a six-foot, three-wire cord.

*Shortwave (254 nm) UV lamps are interchangeable with long wave (365 nm) blacklight or long wave blacklight/blue self-filtering lamps.

Dimensional Schematic



A: .875" Knock-out for electrical line
B: .3125" Mounting holes

Represented by:



American Ultraviolet®

Since 1960. It's all we do.

www.auvhvac.com

212 South Mt. Zion Road • Lebanon, IN 46052

(765) 483-9514 • (800) 288-9288

Fax: (765) 483-9525

Factors are presented for American Ultraviolet fixtures only and American Ultraviolet reserves the right to alter dimensions for design and efficiency improvement without prior notice.

Prolonged, direct exposure to UVC light can cause temporary skin redness and eye irritation, but does not cause skin cancer or cataracts. American Ultraviolet systems are designed with safety in mind and, when properly installed by a professional contractor, do not allow exposure to UV irradiation and allow for safe operation and maintenance.